

LEARN

e3

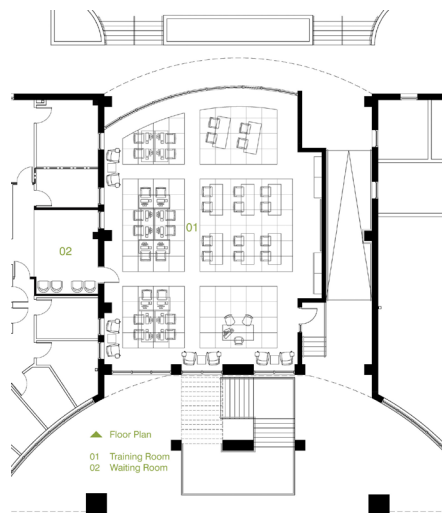
# Education: Design

Educational design requires a keen understanding of the many environmental factors that support and encourage learning. Such design criteria includes age of users, overall spatial arrangement, daylighting, artificial lighting, furniture arrangement, acoustical design, indoor air quality, scale, material, texture, color, durability, technology, etc. Learning spaces have evolved from a one point of focus type classroom with fixed seating to flexible spaces where learning happens everywhere. Pedagogic methodologies rapidly change due to ever developing technology advancements and abundance of available information. Our exploration of current teaching and learning trends allow us to design spaces that will promote learning and collaboration among students in the most unsuspecting of places. The real design challenge is creating adaptable, flexible spaces that can be quickly and affordably transformed in response to the ever evolving classroom experience. Successful educational design also integrates construction types and systems for safety, sustainability, fluid operations, and allow the buildings to be easily maintained.

e3 studio has been involved with daycare facilities, K-12 projects, and higher educational projects. Our portfolio of educational projects demonstrates an approach of design thinking that evaluates each project on an individual basis and results in nurturing teaching and learning environments.







The Wavenet Training Room Addition at Horry-Georgetown Technical College [Conway Campus] is an approximate 2800 sf building addition, completed in August, 2010. The library|student admissions building and auditorium building are connected at the second level, resulting in a 50 foot wide breezeway below. HGTC saw this as an opportunity to gain much needed programmatic space. The addition primarily functions as training center. The building addition ties in with the existing buildings following the geometry and materiality of the existing building. The design incorporates two glass facades to keep transparency and a visual connection between the two flanking courtyards. Thoughtful and appropriate use of material, color, texture, and lighting create interest and allure on the interior.



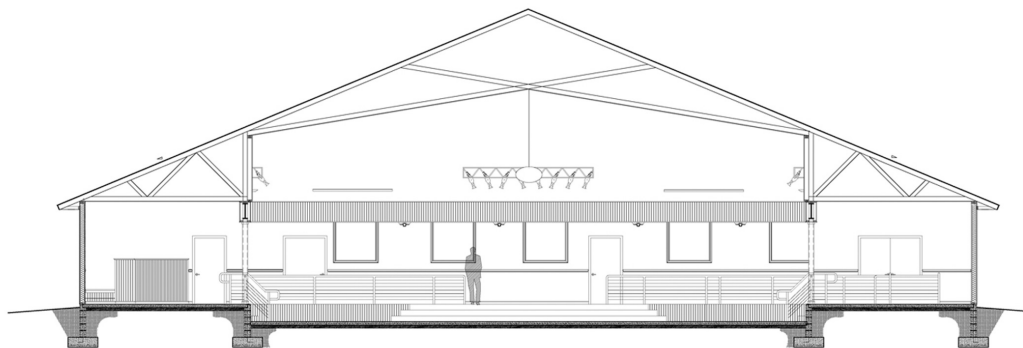
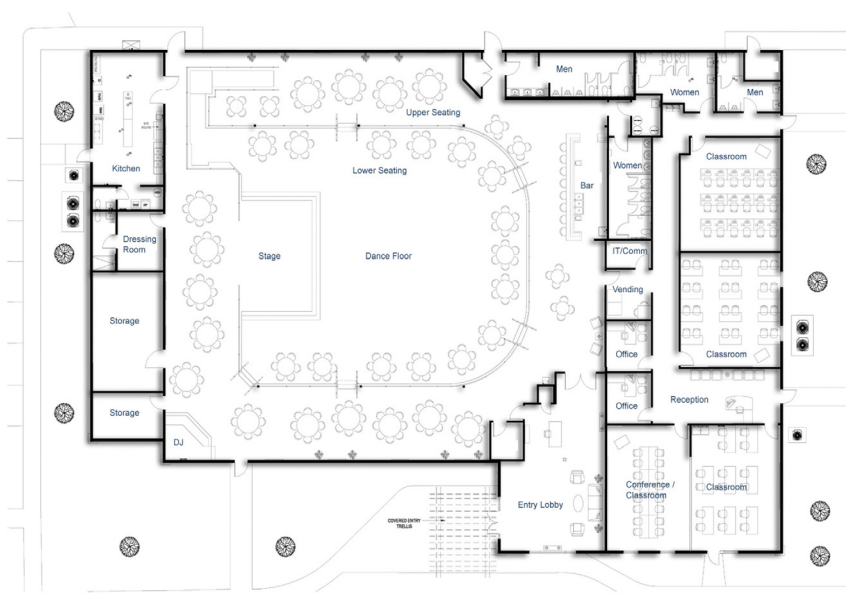
# HGTC Building 300 Technology Building

Conway Campus  
FF&E Consulting  
35,500 sf

e3 studio provided furniture, fixtures, and equipment [FF+E] consulting services for this building. Services included furniture layout for all areas of the building, furniture selection, and furniture finishes. Special consideration was given to the use of each space, the end users, and long term maintainability. Collaboration between students was the focus for the layout of the public areas and flexibility was the primary consideration for the classrooms. Mobile furniture is commonly used in classrooms today to allow a number of teaching and learning methods and to allow multiple uses for the classrooms. Fabrics were used to add accent color to each space for interest. Contemporary furniture was selected to allow for a youthful environment.







## Brunswick Community College South Brunswick Island Center

North Myrtle Beach, SC  
6000 sf  
Completed 2007

Capitalizing on opportunity, The Brunswick Community College purchased a building that was a former adult entertainment facility. Located approximately 20 miles south of the main campus, the college's vision for this project was to create a large banquet hall for rent and accessory continuing education classrooms. Hospitality courses will be held in the classrooms and will be able to learn hands on experience in the adjacent banquet hall. Due to a lack of congregation space in the region, the college plans to hold special events for the college in the banquet hall and when not in use by the college will be rented to the public. Therefore, one of the main goals for the banquet hall was for it to appeal to a wide spectrum of users and uses. The design of the space is a very elegant coastal aesthetic. With a limited budget, the majority of the design is carefully thought out surface application utilizing the existing architecture. Major considerations for the banquet space included versatile lighting and acoustics. Due to the age of the building, there were many challenges with this project. The building had to be designed to comply with the energy code, a fire suppression system had to be added, the fire alarm had to be altered, and the mechanical system had to be retrofitted to comply with code. The design team's exploration of the existing conditions of the building unveiled many nuances with the building that had to be creatively solved. The resulting design addresses all the issues of the building while staying within budget.





## Essential Child Care

Myrtle Beach, SC  
Interior Renovation  
12,000 sf

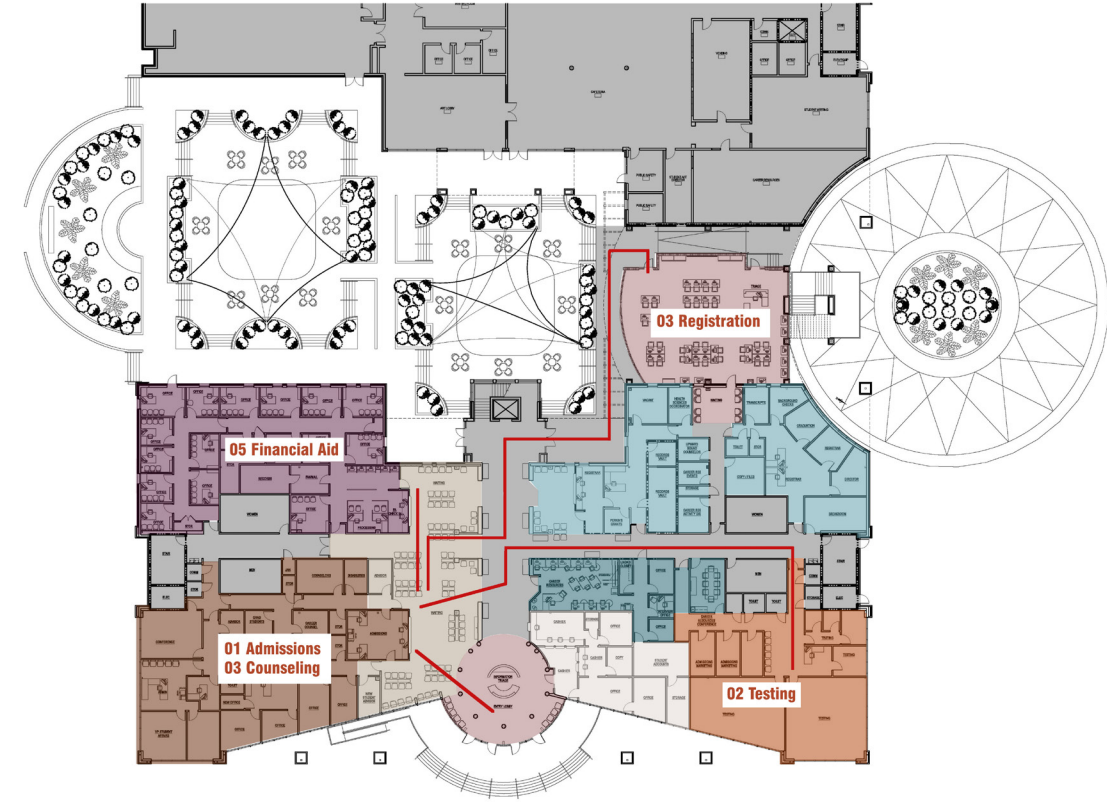
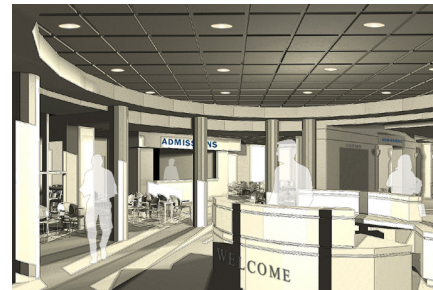
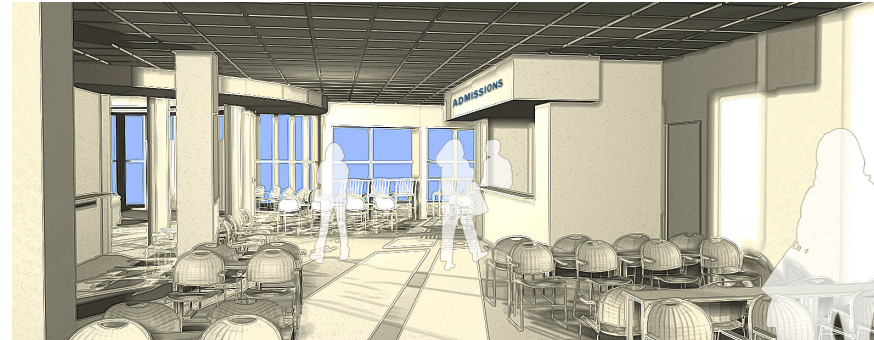
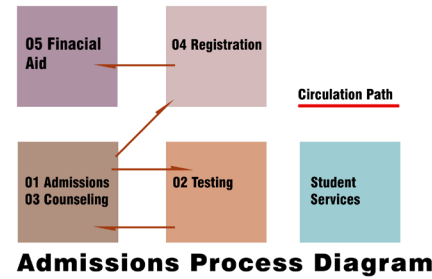
The Essential Child Care building started out as a vacant former tile showroom. The existing building shell was a pre-engineered metal building with a 10,000 sf open warehouse in the back. The warehouse was designed and renovated into 8 child care classrooms with a large multipurpose space in the center. By locating the multipurpose space at the center, it eliminates the closed corridor feeling of typical facilities while allowing for a lunch room during the day, a space for play when its raining, a gathering space for group events, and a space for after school care. The back of the existing building used to be a large asphalt parking lot that was transformed into a large playground. There were many code challenges associated with this project. The project had to be designed in accordance with 4 separate regulatory organizations. The warehouse area had to be completely retrofitted with a new mechanical system, plumbing, and electrical including new electrical service to the building. Moreover, the structure of the building had to be reinforced to accommodate the importance factor of the new use of the facility. The Architect | Construction team worked hand in hand throughout the design phase to explore cost effective means of integrating all the required systems, while delivering a superior facility.



# HGTC: Building 1100

Student Services & General Administration Building Feasibility Study  
Conway Campus  
Feasibility Study  
35,500 sf

Building 1100 at HGTC was experiencing heavy traffic, congestion, and long waiting periods for students at the beginning of each academic session. Also, the existing cafeteria space is expected to become available space in the near future. e3 studio was asked to determine what the best use of this space would be. Lastly, e3 studio was asked to consider what could be done to draw more students to the outdoor courtyard between the two buildings which is under utilized. e3 studio interviewed the admissions staff to understand the admissions process and get a better understanding of the volume of students coming in at peak times. We graphically diagrammed the admissions process and overlaid it on the existing floor plan to determine areas of congestion. Our design process proceeded with using the understanding of the admissions process and arranging the spaces in a sequential order to lessen congestion and allow for a more intuitive means of moving through the admissions process.







## \_about e3 studio

*e3 studio, a certified woman owned business by the Governor's office of SC, is an interdisciplinary design firm providing architecture, interior architecture, and graphic design services. Our expertise lies within the Interior Architecture realm with a vast amount of experience in new construction, interior upfits building additions, and renovation projects. Our project portfolio focuses on Hospitality, Retail, Restaurant, Corporate, and Education projects. Located in Myrtle Beach, e3 studio was founded in 2008. e3 studio is a growing firm that has secured the confidence of many clients in the Grand Strand with its exceptionally talented design team. Our passion for our craft is exhibited in our beautiful and functional interiors. This is achieved with our visionary use of material, color, lighting, and fluid arrangement of spaces. We approach projects with a design thinking methodology implementing strategic design decisions resulting in environments that support and enhance the use of each project.*

*e3 studio is a growing firm that has successfully completed projects ranging in size from \$30,000 small interventions to \$2,000,000 new construction projects. Our services are all encompassing within the field of Interior Architecture including programming, conceptual design, mechanical, electrical, plumbing, and structural coordination, finish selection, equipment selection, lighting and plumbing fixture selections, furniture selection and layout, construction documents, and construction administration.*

*Our reputation is built on our passion and dedication for creating remarkable environments for people. Our primary objective is to achieve the client's project vision with a creative and innovative approach while respecting the project budget and time constraints. e3 studio's creative team is recognized for its team focused, holistic approach to projects.*